



## HOOKS & SWIVELS

**SS-4055**  
Latch Kits



### LATCH ORDERING INSTRUCTIONS

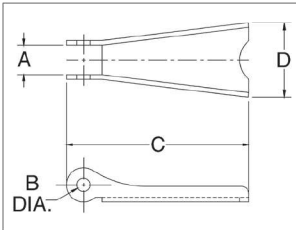
Specify latch kit stock number.  
Specify capacity of hook to which latch will be assembled.  
Specify hook material (carbon or alloy).

- Stainless steel construction with cadmium plated steel nuts.
- Shipped packaged and unassembled.
- Instructions included for easy field assembly.

APPLICATION AND WARNING INFORMATION  
SECTION 17

4

### SS-4055 LATCH KITS



Hook Size (t)	Hook ID Code	Stock No.	Weight Each (lb)	Dimensions (in)			
				A	B	C	D
3/4	D	1090027	.02	.38	.16	1.44	.59
1	F	1090045	.02	.38	.16	1.60	.59
1-1/2 - 2	G / H	1090063	.03	.47	.19	1.84	.82
3	I	1090081	.06	.56	.17	2.41	1.00
5	J	1090107	.11	.58	.20	2.97	1.21
7-1/2 - 10	K / L	1090125	.17	.59	.27	3.66	1.50
15	N	1090143	.39	.83	.39	4.94	1.90
20	O	1090161	.63	.94	.52	5.88	2.56
25 - 30	P / S	1090189	1.12	2.19	.39	6.50	3.84
40	T	1090205	1.77	3.31	.52	7.88	4.12

**S-4088**  
Alloy Hook Latch Kits

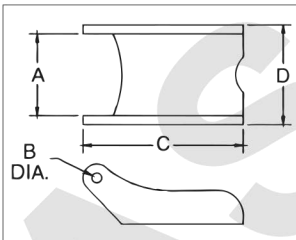


### LATCH ORDERING INSTRUCTIONS

Specify latch kit stock number.  
Specify capacity of hook to which latch will be assembled.  
Specify hook material (carbon or alloy).

- To be used on A-327 and A-339 Grade 8 sling hooks.
- Latch kits shipped unassembled and individually packaged with instructions.

### S-4088 Alloy Hook Latch Kits



Hook Chain (in)	Stock No.	Weight Each (lb)	Dimensions (in)			
			A	B	C	D
9/32 (1/4)	1090250	.06	.78	.16	2.03	.94
3/8	1090251	.14	1.03	.19	2.69	1.25
1/2	1090252	.15	1.03	.19	3.00	1.25
5/8	1090253	.15	1.03	.19	3.25	1.25
3/4	1090254	.15	1.53	.26	4.13	1.88
7/8	1090255	.15	1.53	.26	4.66	2.00